

# HUNTERS<sup>®</sup>

HERE TO GET *you* THERE



## Wingfield Way

Beverley, HU17 8XE

Offers In The Region Of £175,000



2



1



1



C

Council Tax: B

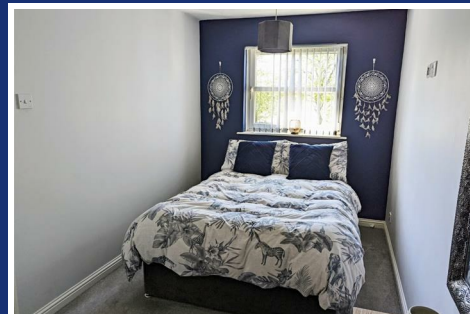




# 55 Wingfield Way

Beverley, HU17 8XE

Offers In The Region Of £175,000



## Entrance Hall

UPVC front entrance door, cloak cupboard and laminated wood style flooring.

## Lounge

UPVC double glazed French doors to the rear aspect, radiator, TV point and stairs to the first floor landing.

## Kitchen

UPVC double glazed window to the rear aspect, laminate wood style flooring, range of wall and base units with roll top work surfaces, breakfast bar feature, sink and drainer unit, integrated fridge, electric oven, gas hob, fitted cupboard, extractor hood and power points.

## Landing

UPVC double glazed window to the front aspect, loft access and power points.

## Bedroom One

UPVC double glazed window to rear aspect, airing cupboard, radiator, TV point and power points.

## Bedroom Two

UPVC double glazed window to the rear aspect, radiator and power points.

## Shower Room

UPVC double glazed window to the front aspect, heated towel rail, tiled shower enclosure with mains shower, low flush WC, wash hand basin with vanity unit and extractor fan.

## Garden

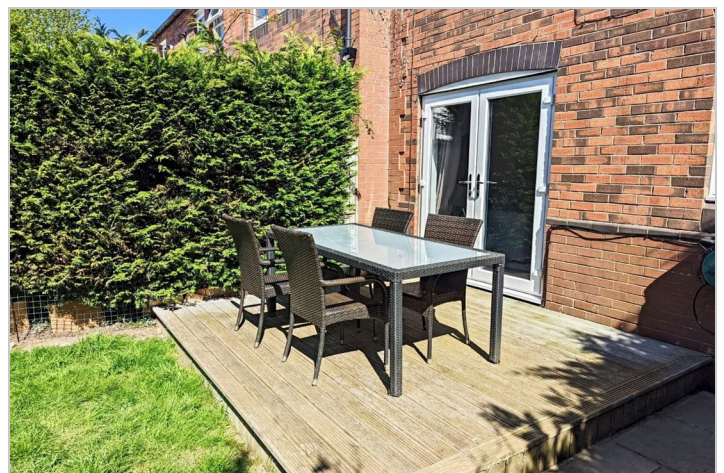
Side entrance to the garden which is mainly laid to lawn with plant and shrub borders, decking area, patio area and outside tap.

## Parking

Off-street parking.

**\*\*A WELL-PRESENTED END OF TERRACE HOME, WITH SPECTACULAR VIEWS OF THE OPEN COUNTRYSIDE!!\*\***

This wonderful two bedroom home is located at the end of a quiet cul-de-sac in Beverley, just a short distance from a selection of handy amenities including Supermarkets, popular gymnasium, petrol station, take-out restaurants and more. The property also benefits from a range nearby transport links allowing you to explore and enjoy the neighbouring villages, towns, cities and the Georgian Market Town centre itself with ease. The home offers the perfect blend of town and country living, and boasts a wonderful garden to the rear with one of the most glorious views of the untouched countryside. The property itself briefly comprises; entrance hall, lounge, kitchen, two bedrooms, shower room, garden to the rear with unmatched views and off-street parking. Viewings are strongly recommended to avoid missing out on this wonderful home.





Road Map



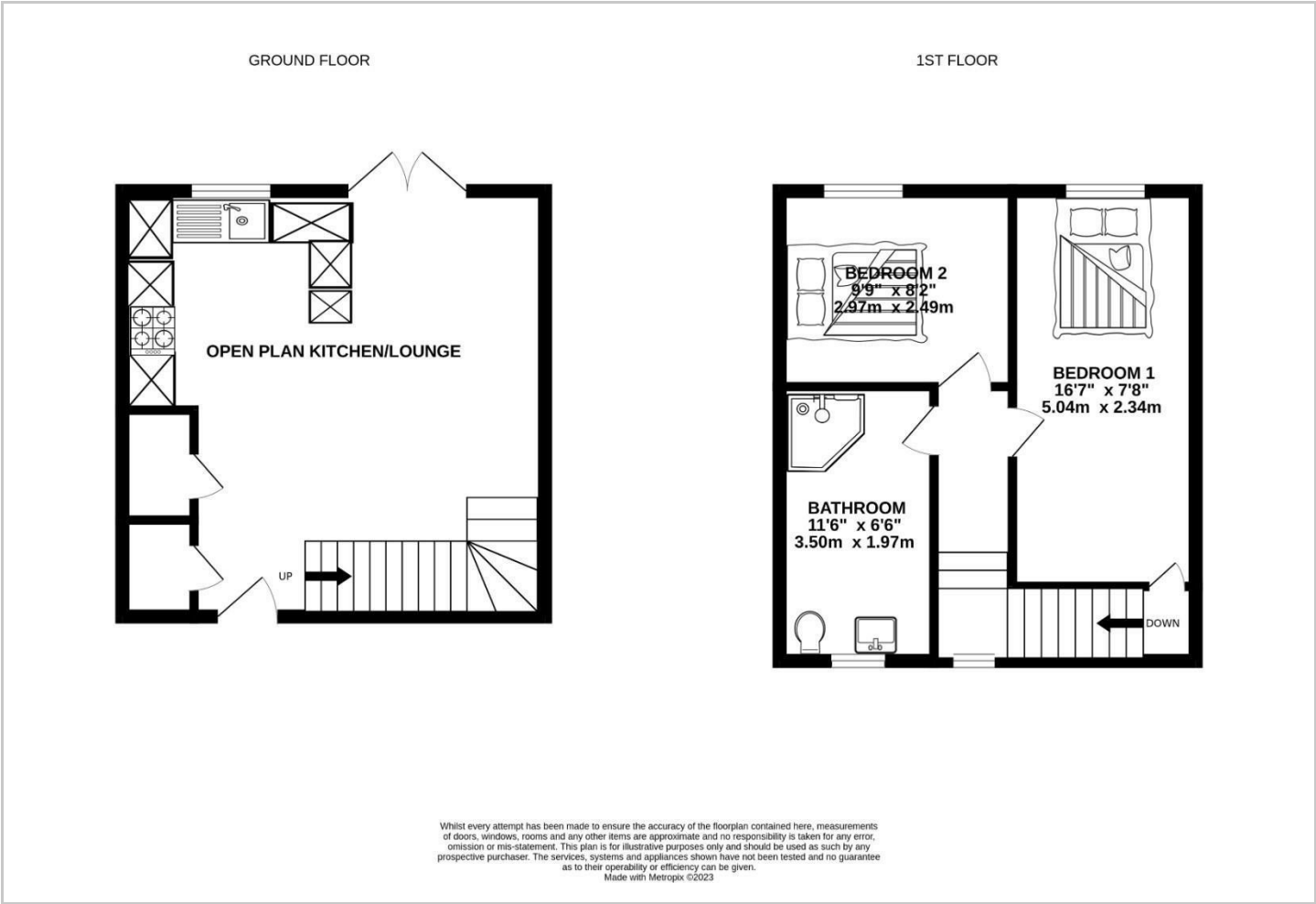
Hybrid Map



Terrain Map



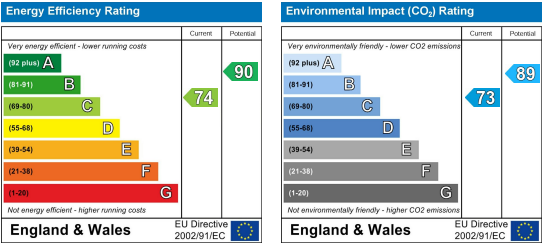
Floor Plan



Viewing

Please contact our Hunters Beverley Office on 01482 861411 if you wish to arrange a viewing appointment for this property or require further information.

Energy Efficiency Graph



These particulars are intended to give a fair and reliable description of the property but no responsibility for any inaccuracy or error can be accepted and do not constitute an offer or contract. We have not tested any services or appliances (including central heating if fitted) referred to in these particulars and the purchasers are advised to satisfy themselves as to the working order and condition. If a property is unoccupied at any time there may be reconnection charges for any switched off/disconnected or drained services or appliances - All measurements are approximate. **THINKING OF SELLING?** If you are thinking of selling your home or just curious to discover the value of your property, Hunters would be pleased to provide free, no obligation sales and marketing advice. Even if your home is outside the area covered by our local offices we can arrange a Market Appraisal through our national network of Hunters estate agents.